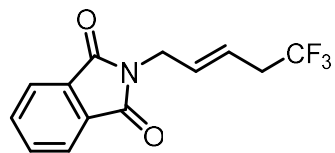


CDCl₃
600 MHz

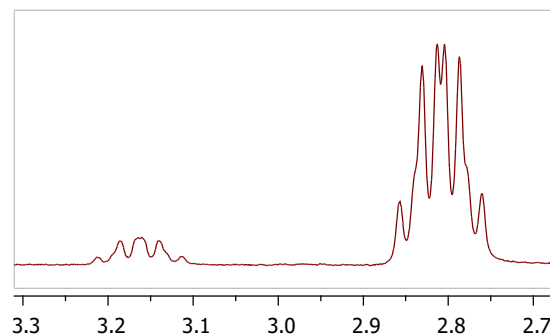
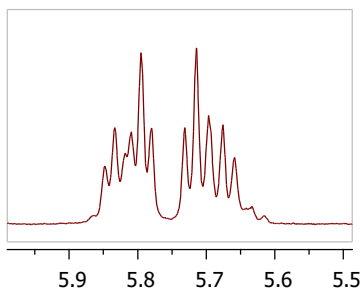


7.87
7.86
7.85
7.84
7.74
7.73
7.72

5.85
5.83
5.82
5.81
5.79
5.78
5.73
5.71
5.70
5.68
5.66
5.63
5.62

4.31
4.30

3.21
3.19
3.16
3.14
3.11
2.86
2.83
2.81
2.80
2.79
2.76



2.02
2.05

0.97
0.97

2.00

0.22
1.77

10.5 10.0 9.5 9.0 8.5 8.0 7.5 7.0 6.5 6.0 5.5 5.0 4.5 4.0 3.5 3.0 2.5 2.0 1.5 1.0 0.5 0.0
f1 (ppm)